



Casa del Mare - 1 Etap residential complex

Location **Kyrenia, Esentepe**



About the project



Developer	Northernland
Start of sale	01.04.2023
Key handover	2026
Houses/blocks	43
Building floor	2 Min 2 Max
Units total	222 - 1+1, 258 - 2+1

Distance to the sea - 100 m

Distance to key locations:

5 minutes drive from a professional 18 hole international golf course and a further 25 minutes drive from Kyrenia

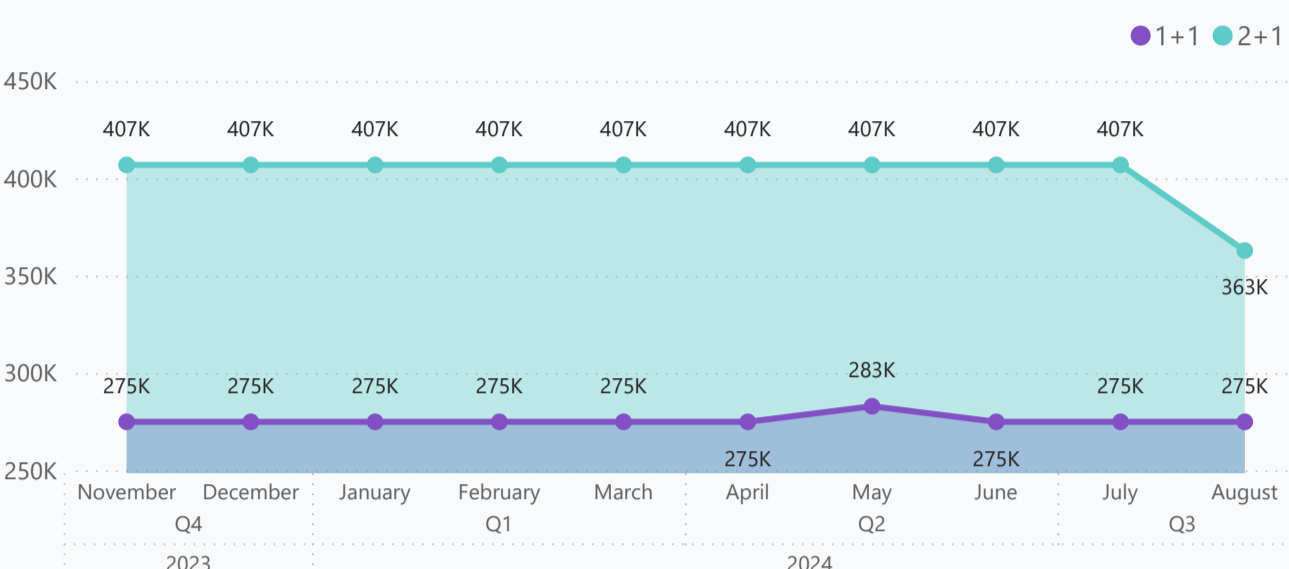
Whether you are seeking the perfect place to relax and unwind, or looking to indulge in the ultimate luxury vacation experience, Casa del Mare is the perfect destination. One of the most unique projects of Northern Cyprus, Casa del Mare blends luxury and holiday life perfectly with its walking paths intertwined with nature, indoor and outdoor pools, Lagoon, Pera, Fitplus, Padel tennis and many more. It's time to make sea, sand and sun a permanent lifestyle.

Complex infrastructure

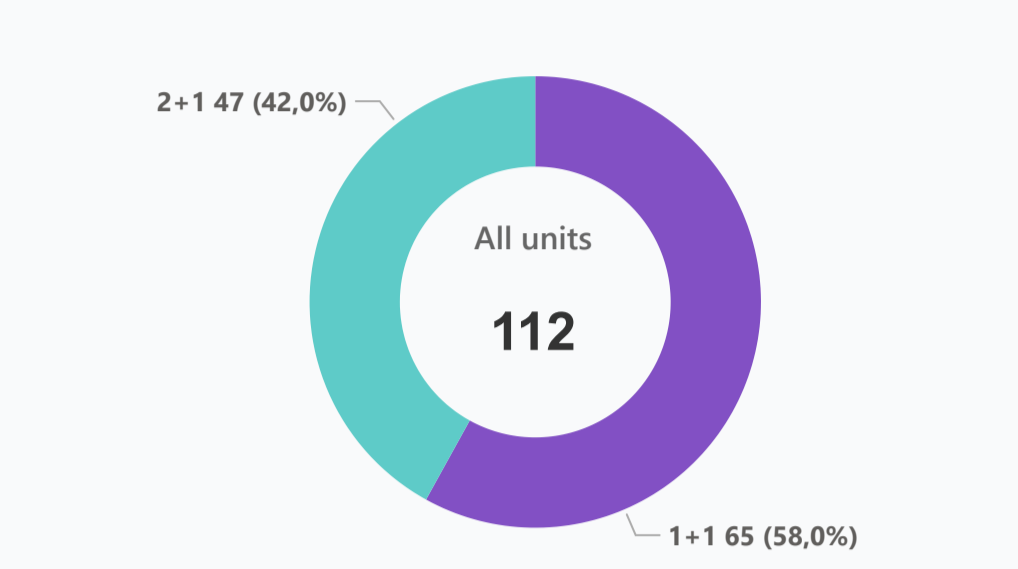
Bar	✓	Café	✓	Central generator	✓	Central satellite	✓	Fitness centre	✓	Indoor pool	✓	Kid's playground	✓	Open pool	✓	Parking	✓	Restaurant	✓
Tennis court	✓	VRF system	✓																

Available units 112 / 480 total

Median price per unit, K GBP



Structure of available units



Plans



1+1



2+1

Payment plans Deposit (non-refundable) 5%

Option	Down payment	Instalments months	Discount	Offer
Option 1	35%	65% till key	5% upon full payment	-
Option 2	-	-	-	-
Option 3	-	-	-	-
Option 4	-	-	-	-

Special offer

Pay a down payment of 50% and you will receive furniture as a gift

Fully furnished design package

-

Rental guarantee

5% for 2 years

Trafo 2500 GBP

Resale after 35%

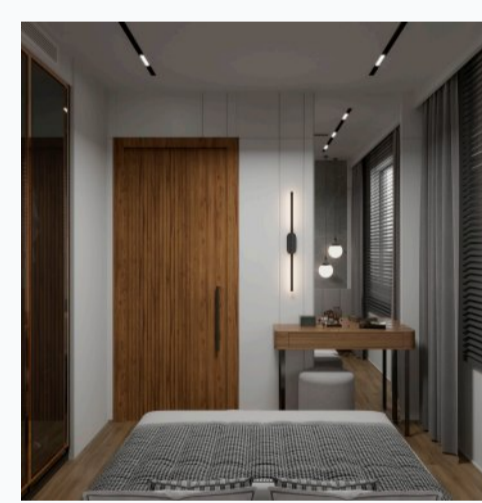
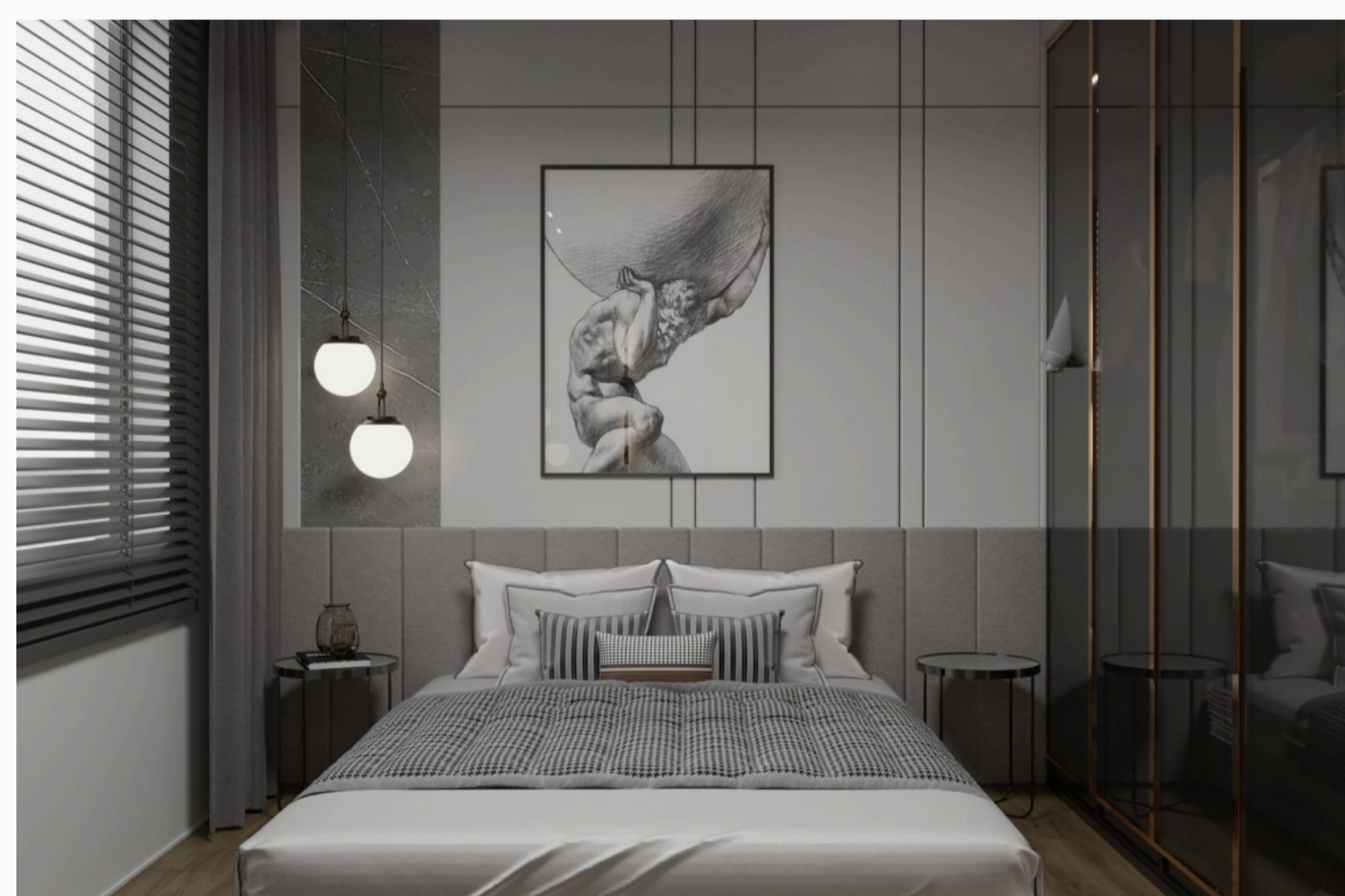
Maintenance fee 80-120 GBP monthly

Rental services -

Details

Bedrooms	Subtype	Block	Unit №	Floor	View	Bathroom	Internal area, sq. m	Balcony/Terrace, sq. m	Rooftop terrace, sq. m	Garden, sq. m	Gross covered area, sq. m	Current price, GBP	Price per sqm, GBP
1+1	Flat	41	7	01				59			112	304 900	2 722
1+1	Flat	41	8	01				59			112	304 900	2 722
1+1	Flat	42	4	0				12			65	246 900	3 798
1+1	Flat	42	3	0				18			71	246 900	3 477
1+1	Flat	42	5	01				59			112	304 900	2 722
1+1	Flat	42	6	01				59			112	304 900	2 722
1+1	Flat	43	2	0				12			65	246 900	3 798
1+1	Flat	43	7	0				12			65	246 900	3 798
1+1	Flat	43	8	0				12			65	246 900	3 798
1+1	Flat	43	5	0				18			71	246 900	3 477
1+1	Flat	43	12	01				59			112	304 900	2 722
2+1	Loft	17	7	0				39			92	362 900	3 945
2+1	Loft	19	15	01				59			112	304 900	2 722
2+1	Loft	19	16	01				59			112	304 900	2 722
2+1	Loft	19	9	01				89			142	494 900	3 485
2+1	Loft	20	4	0				39			92	362 900	3 945
2+1	Loft	20	3	0				45			98	362 900	3 703
2+1	Loft	20	13	01				89			142	494 900	3 485
2+1	Loft	20	14	01				89			142	494 900	3 485
2+1	Loft	20	15	01				89			142	494 900	3 485
2+1	Loft	20	16	01				89			142	494 900	3 485
2+1	Loft	21	12	0				36			89	406 900	4 572
2+1	Loft	21	13	0				36			89	406 900	4 572
2+1	Loft	21	14	0				36			89	406 900	4 572
2+1	Loft	21	6	0				36			89	406 900	4 572
2+1	Loft	21	11	0				39			92	406 900	4 423
2+1	Loft	21	4	0				39			92	406 900	4 423
2+1	Loft	21	3	0				45			98	406 900	4 152

Interior specification



Interior specification

60/120cm high quality floor tiles	Air Conditioner	Artificial stone kitchen countertop	Double glazed windows	Fitted wardrobes in each bedroom	High quality taps and showers	Laminate flooring in the bedrooms	Underfloor heating in bathrooms
-----------------------------------	-----------------	-------------------------------------	-----------------------	----------------------------------	-------------------------------	-----------------------------------	---------------------------------

Exterior specification



Exterior specification

Glass fence balcony	Landscape design
---------------------	------------------

Location of complex

